

 CS.Neo2

EASY
EXCELLENCE

3D-SCANNERS
MILLING
PROSTHETIC PARTS
ORTHODONTICS

G2

Groundbreaking innovation

—
incredibly easy to use



www.cadstar.dental

 **CAD**star

Digitalization has never been so easy!

It arrived. The second generation
of our most successful product.

**Better,
stronger and
faster**

than ever before!

History of evolution

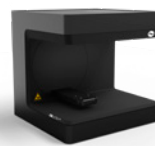
2006

Introduction of CAD/CAM into the company structure



2015

Launch of 1st Dental Scanner
„CS.Ultra“



2017

Launch of the 2nd generation
„CS.Ultra Pro“



2019

Launch of 2nd Dental Scanner
„CS.Neo“

2023

Launch of the 2nd generation „CS.Neo2“



Let's talk tech

- * HxWxD: 396x405x337 mm
- * Weight: ~12 kg
- * Scan system: 2-3 axis
- * Language: Multilingual
- * Scantype: BW/Color
- * Technology: structured white light
- * Connection type: USB 3.0
- * Guarantee: 2 years

available accessories

- * Arti Base
- * Calibration body
- * Multi-Die adapter
- * Modelholder (with screw or Blu-Tac)
- * Model fixator
- * Quarter Tray adapter
- * Automated impression axis
- * Split Cast adapters

< 30 sec.

for digitalization of a 3 element bridge?

Sure - no problem and we'll add one on top. For the whole workflow you only need 1-Click.

Competitors	300 Sek.
CS.Neo2 ^{Max}	< 30 Sek.



Ø Human hair	100 µm
CS.Neo2 accuracy	up to 5 µm

48 Mpx

per shot and everything in crystal clear quality!

Tested and certified, because we won't leave the result to chance!

100% compatibility with exocad

open system

Export data: 3Shape, Gamma, OnyxCeph, STL, PLY

technical support

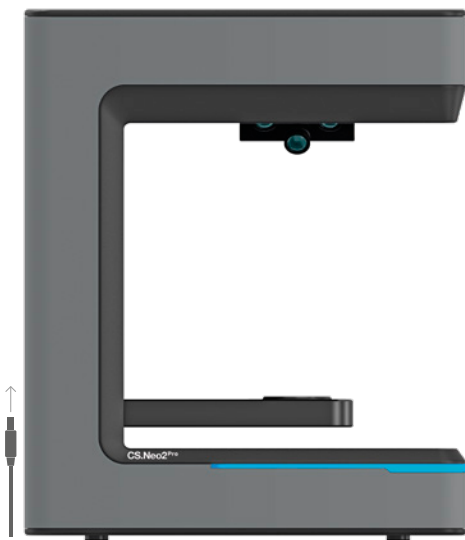
free of charge

free from annoying license fees/service contracts

Manufacturing

made in Austria

> 90% of components from Europe



We think further

Due to the wall-flush design, our scanner can easily and seamlessly be integrated into any laboratory. No broken cables, no unnecessary waste of space.



CS.Neo2 Max

Work smarter, not harder.

Don't scan your work no longer step by step. Use the new dual-scan technology and complete the following tasks in just one step.

Upper- and lower jaw
Gingiva (UJ+ LJ)
Implants (UJ+ LJ)

Neighbour teeth (UJ+ LJ)
up to 28 stumps

Precision is just an auxiliary expression.

Per scan position our scanner captures and processes more than 140 million image points.

140.000.000 image points/position

Calculation above the speed of light.

In less than a second our scanner is doing more than 1 billion calculations.

1.000.000.000 calculations/sec.

Our best scanner, so that your magnificent work will get even greater.



DEEP VIEW

4 eyes that really see EVERYTHING.

Deep View is a quad-cam scanning technique to have a deeper look into interdental areas.

- * rescanning not necessary any more
- * True Color (RGB color cameras)
- * CS.Neo2 Pro / CS.Neo2 Max



AUTO OCCLUSION

1 step with 1.000 benefits.

Take advantage of perfect occlusion with less effort for your scanned objects.

- * Articulator scan not necessary any more
- * ability to save several types of articulators
- * CS.Neo2 Pro / CS.Neo2 Max



BEAST MODE

Now is the time to unleash the beast.

The automatic GPU detection in our scanning application will get the very best out of your scanner.

- * 60% increase in performance
- * super realistic scan results
- * all CS.Neo2 models



ID DETECTION

Less is more, today more than ever.

Thanks to the automatic accessories recognition handling the scanner is more comfortable than ever before.

- * 50% less interaction with the scanner
- * Less-Click Workflow (autostart)
- * CS.Neo2 Pro / CS.Neo2 Max

Yes, we scan!

our new models in comparison



CS.Neo2



CS.Neo2^{Pro}



CS.Neo2^{Max}



No

Auto Occlusion



Yes

Auto Occlusion



Yes

Auto Occlusion



No

ID Detection



Yes

ID Detection



Yes

ID Detection



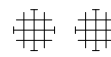
No

Deep View



Yes

Deep View



Yes

Deep View



1

Model capacity



1

Model capacity



2

Model capacity



12 Sek.

Scantime per model*



10 Sek.

Scantime per model*



5 Sek.

Scantime per model*



2

Cameras (black/white)



4

Cameras (Color RGB)



8

Cameras (Color RGB)



12 Mpx

Resolution cameras



24 Mpx

Resolution cameras



48 Mpx

Resolution cameras

Compare us

You'll see it's worth it

	2 nd generation CS.Neo	Scanner 1	Scanner 2	Scanner 3	Scanner 4
open system / STL, PLY (exocad compatible)	✓				
made in Austria	✓				
5 sec. for full arch scan	✓				
< 30 sec. for 3 element bridge	✓				
5 µm accuracy	✓				
up to 8 color-cameras (48 Mpx)	✓				
scan up to 2 models simultaneously	✓				
scan up to 28 stumps simultaneously	✓				
capacity for whole articulator	✓				
Deep View	✓				
Beast Mode	✓				
Auto Occlusion	✓				
ID Detection	✓				
no royalties	✓				
no maintenance fees	✓				
2 year guarantee (expandable up to 4 years)	✓				
free support (during guarantee period)	✓				
free training (CADstar Academy)	✓				
express repair or replacement within 48h	✓				